



ENC Designer Enterprise

- **ENC Designer Version 4.6**
- **ENC Manager Version 2.5**
- **ENC Referencer Version 1.12**

Release Notes

April 2014

SevenCs GmbH

Atlantic Haus

Zirkusweg1

D-20359 Hamburg

Tel. +49 (0)40/851 72 40

FAX +49 (0)40/851 72 4-79

<http://www.sevencs.com>

Copyright:

All rights reserved. No part of this document may be reproduced, in any form or by any means, disclosed or used by any person who has not received prior written authorization from SevenCs GmbH.

Brand names:

Brand names, logos and trademarks used in this document remain the property of their respective owners.

Referrals and links:

SevenCs does not assume any liability for any external content linked to our site / to this document, including links provided in our website. SevenCs has no influence on the content of such sites. The owners of such linked websites take sole responsibility for their content.

Disclaimer:

SevenCs does not guarantee any actuality, correctness, completeness or quality of the information provided. Claims of liability referring to material or ideal damages, due to the use or non-use of the information or due to the use of wrong and incomplete information, are strictly ruled out, as long as there is no verifiable willful or reckless fault on the part of SevenCs GmbH.

Contents

Contents	iii
1 Introduction	1
1.1 Contents.....	1
1.2 Related Documentation.....	1
2 Overview	2
2.1 Installation and De-Installation of older versions.....	2
2.2 Supported Operating Systems	2
2.3 Installation Path	2
2.4 Library Path	3
3 Software Appearance	4
3.1 New Program Icons	4
3.2 New Tool Bar Icons	4
4 New Features and Functions	5
4.1 Import of xyz Bathymetry data/Bathymetry Mode.....	5
4.2 Object Manager, selected item after deletion of feature	5
4.3 Adding multiple coordinates to an edge.....	6
4.4 Automatic integration of additional tools	6
4.5 Support of additional coordinate input format	6
4.6 Reset placement of dialogues windows	6
4.7 Simplification of Make Nodes function.....	7
4.8 Import of multiple S-57 files	7
4.9 Extensions of bENC feature catalogue.....	7
5 Bug Fixes	8
5.1 Tool Bar buttons sometimes not active.....	8
5.2 Dictionary Examples could not be used.....	8
5.3 Wrong Group set in Port ENCs.....	8
5.4 Display of notice marks in PENCs.....	8
5.5 Creation of New Edition in ENC Manager.....	8
5.6 Quality Assurance Tools not available	9

- 6 Other Issues.....10**
- 6.1 Storage of temporary cell10
- 6.2 Update of Inland ECDIS Feature Catalogue Version 2.3.....10

1 Introduction

1.1 Contents

These release notes provide information about modifications, extensions, and bug fixes that have been implemented in the current software versions of the *ENC Designer Enterprise* package since their previous release.

For further information about the functionality of *ENC Designer Enterprise* software please consult the respective user guides or contact SevenCs support department (support@sevencs.com).

1.2 Related Documentation

ENC Designer, Version 4.6, User's Guide, 2014
Document Version 1.0

ENC Manager, Version 2.5 User's Guide, 2014
Document Version 1.0

ENC Referencer, Version 1.12 User's Guide, 2014
Document Version 1.0

2 Overview

The *ENC Enterprise* package comprises *ENC Designer*, *ENC Manager* and *ENC Referencer*.

ENC Designer is the central application of the SevenCs ENC tools production suite. It is a software tool that has been developed for production and maintenance of S-57 Charts (ENC, IENC, AML, and custom products).

ENC Manager is an S-57 ENC production workflow tool. It is also used to control S-57 update creation and to compile Exchange Sets for data distribution.

ENC Referencer can be used for interactive geo-referencing of image files containing geo-spatial data. Geo-referenced images can serve as raster backdrops in *ENC Designer*.

2.1 Installation and De-Installation of older versions

If the default installation path is used (see 2.3) it is not required to de-install older software versions of the *ENC Designer Enterprise* package. To install the new software please run the installation script (`encdesigner-4.6.x-32bit.msi`) and follow the instructions on the screen.

2.2 Supported Operating Systems

ENC Designer Enterprise and its components can be operated under Windows XP 32bit, Windows 7 (32bit/64bit), and Windows 8 (32bit/64bit).

2.3 Installation Path

The installation script will suggest the following default installation path: `C:\Program Files\ENC_Tools\ENC_Designer`. However, you are free to install the software under any other directory.

2.4 Library Path

ENC Designer and *ENC Manager* use a variety of different resource files (e.g. feature dictionaries, lookup tables, symbol files, user preferences, product list, etc.). The resource files are stored in a dedicated path – the so-called library path.

Library path location:

Win 7:

C:\ProgramData\SevenCs\ENC_Designer

XP:

C:\Documents and Settings\All Users\Application Data\
SevenCs\ENC_Designer

3 Software Appearance

3.1 New Program Icons

Program Desktop icons and Windows Start Menu icons have been redesigned. In the 2014 release version of *ENC Enterprise* all software icons are shown in anthracite grey.



ENC Designer Icon



ENC Referencer Icon

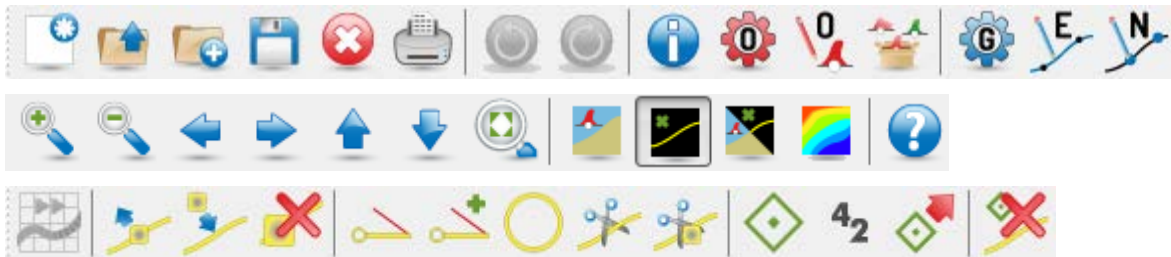


ENC Manager Icon

3.2 New Tool Bar Icons

The toolbar icons of ENC Designer and ENC Referencer have been redesigned to appear in a fresh look without losing their recognisability.

Overview ENC Designer Tool Bar Icons:



Overview ENC Referencer Tool Bar Icons:



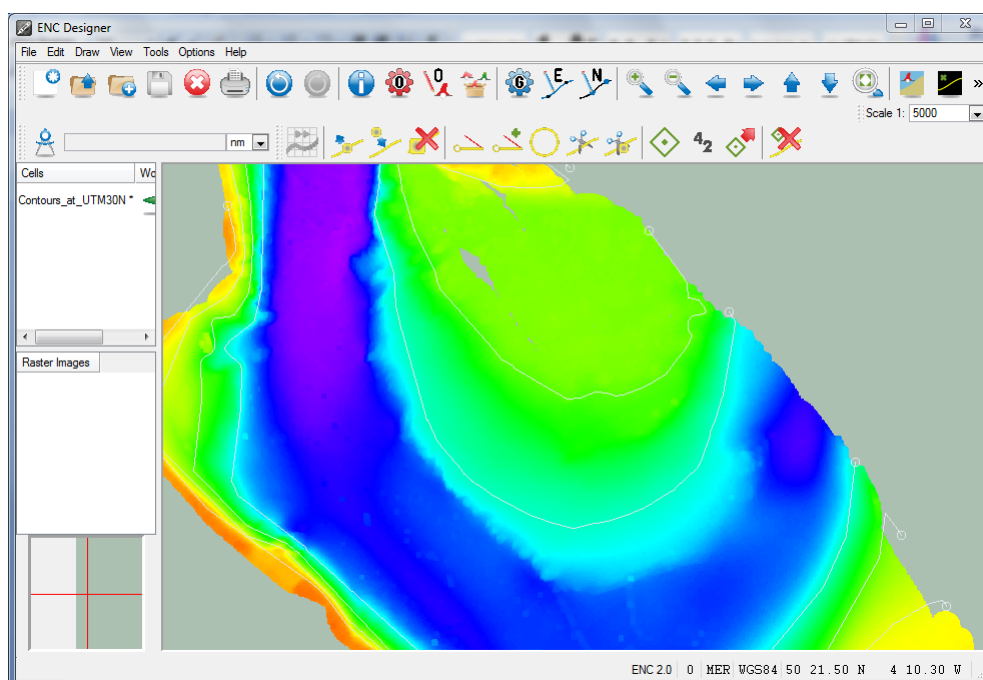
4 New Features and Functions

This section gives an overview about all the new features and convenience functions that have been implemented in this ENC Designer Enterprise Package. Many of the convenience functions described here have been requested by our customers.

4.1 Import of xyz Bathymetry data/Bathymetry Mode

In version 4.6.0 of *ENC Designer* the *Bathymetry Mode* has been introduced. *ENC Designer* supports import of depth data in ascii format – also referred to as xyz data. A pre-defined bathymetry colour palette is used to visualize the data. The user can set parameters to specify the colour display at discrete depth ranges.

The *Bathymetry Mode* is very useful to compare charted contour lines and its source bathymetry. Bathymetry data for example that was processed in *ENC Contour Generator* can be displayed in *ENC Designer* to review the contouring results.



4.2 Object Manager, selected item after deletion of feature

ENC Designer's Object Manager is often used to generate a list of features that require special attention or modifications. Users can review, edit or delete the listed items one after the other. After feature deletion the selection-focus would jump back to the first item in the list.

This behavior was changed in *ENC Designer 4.6* – *Object Manager* will automatically put the selection-focus to the next item in the list – i.e. after the deleted one. This makes it much easier for users to step through the list of features one after the other.

4.3 Adding multiple coordinates to an edge

Traditionally the *Edge Editor* is used to manually add coordinate pairs to existing edges or to edit existing ones. A new feature has been implemented to copy a list of coordinates from an external source (e.g. file or web-site) and past all of them to the *Edge Editor*. This will allow users to create new edges from scratch by simple copy and paste actions.

4.4 Automatic integration of additional tools

ENC Designer comes with a set of additional tools (e.g. *makesoe* for automatic creation of Group 1 objects, *setAgency* for automatic encoding/correction of the agency code, *checkdepnt* for automatic correction of non-continuous depth contours, etc.).

To include these tools in the graphical user interface of *ENC Designer*, users would have to locate and configure each tool individually via the *Options* menu. From *ENC Designer 4.6* on this is not required anymore since all tools will be integrated in the GUI automatically after installation.

4.5 Support of additional coordinate input format

In *ENC Designer* there are different places for coordinate input (manual entry and copy/paste). Depending on the coordinate system (projected or geographic) there is a variety of possibilities how input coordinates could be formatted - most of which are already supported.

The notation for geographic coordinates often uses dashes to separate degrees from minutes and seconds (e.g. 55-40.075N 020-07.137E). This special notation has been added as well.

4.6 Reset placement of dialogues windows

During the data production process users may want to switch between various dialogue windows which provide different functionality (e.g. *Geometry Manager*, *Object Manager*, *Object Box*). It is not required to close a specific dialogue before the next one can be used. This gives users maximum flexibility. There are no restrictions regarding the placement of individual dialogues. After a restart *ENC Designer* will remember the last dialogue placement.

This new function called *Reset Dialogues* will rearrange the placement of the dialogues to their default positions.

4.7 Simplification of Make Nodes function

The function *Make Nodes* can be used to automatically fix corrupted edges that do not have connected nodes. The function was simplified and *ENC Designer* will now check all edges when *Make Nodes* is executed no matter if they are explicitly selected or not.

4.8 Import of multiple S-57 files

To read S-57 files (file extension *.000) with *ENC Designer* the S-57 import function is used. From *ENC Designer 4.6* on multiple S-57 files can be selected and imported at once.

4.9 Extensions of bENC feature catalogue

The bENC feature catalogue was extended and now includes depth area object *dep_are* (lower case). It has been adopted from IENC 2.3 feature catalogue. *ENC Designer* has been extended accordingly.

5 Bug Fixes

Following is an overview of the bugs that have been fixed.

5.1 Tool Bar buttons sometimes not active

ENC Designer's tool bar functions sometimes got deactivated when more than one cell was loaded. Cells had to be loaded again to overcome the problem.

Status: fixed.

5.2 Dictionary Examples could not be used

ENC Designer comes with two example dictionaries (MYOBJCAT.7di und MYATRCAT.7di) that can be used to create customized object and attribute definitions. By mistake these files were encrypted.

Status: fixed, files are editable.

5.3 Wrong Group set in Port ENCs

Users producing PENCs encountered the problem that *ENC Designer* would set the invalid Group identifier 255 instead of 1 for Skin of the Earth objects and 2 for all other objects.

Status: fixed.

5.4 Display of notice marks in PENCs

Like IENCs PENCs may contain notice marks (e.g. prohibition signs for river navigation). Detailed display of notice marks didn't work for PENCs.

Status: fixed.

5.5 Creation of New Edition in ENC Manager

ENC Manager would allow creating a new Edition of a dataset without closing the previous one.

Status: fixed, old Edition must be closed before new Edition can be created.

5.6 Quality Assurance Tools not available

In rare occasions Quality Assurance tools (*ENC Analyzer* and *ENC Designer*) were not available in *ENC Manager*.

Status: Fixed.

6 Other Issues

6.1 Storage of temporary cell

ENC Designer automatically creates a temporary copy of the current working cell. Only when the user saves his or her data the content of the temporary cell will be written to the original cell. This helps to avoid that the original cell gets corrupted in case of a software crash.

ENC Designer used to store the temporary cell in the same directory as its original copy. This could lead to problems when cells were loaded from a network rather than from a local directory. A few customers encountered data damage after they lost network connectivity.

To avoid this risk *ENC Designer 4.6* saves the temporary working cell in a local directory (e.g. C:\ProgramData\SevenCs\temp under Windows 7 and Windows 8).

6.2 Update of Inland ECDIS Feature Catalogue Version 2.3

On its web-site the Inland ENC Harmonization Group issued the following information for Inland ECDIS users and software manufacturers: “The first versions of the Feature Catalogue which have been published had some errors. A first correction has been produced on 2011-06-07. A second correction has been produced 2013-05-24.”

<http://ienc.openecdis.org/?q=node/35>

ENC Designer has been updated to include the respective corrections.