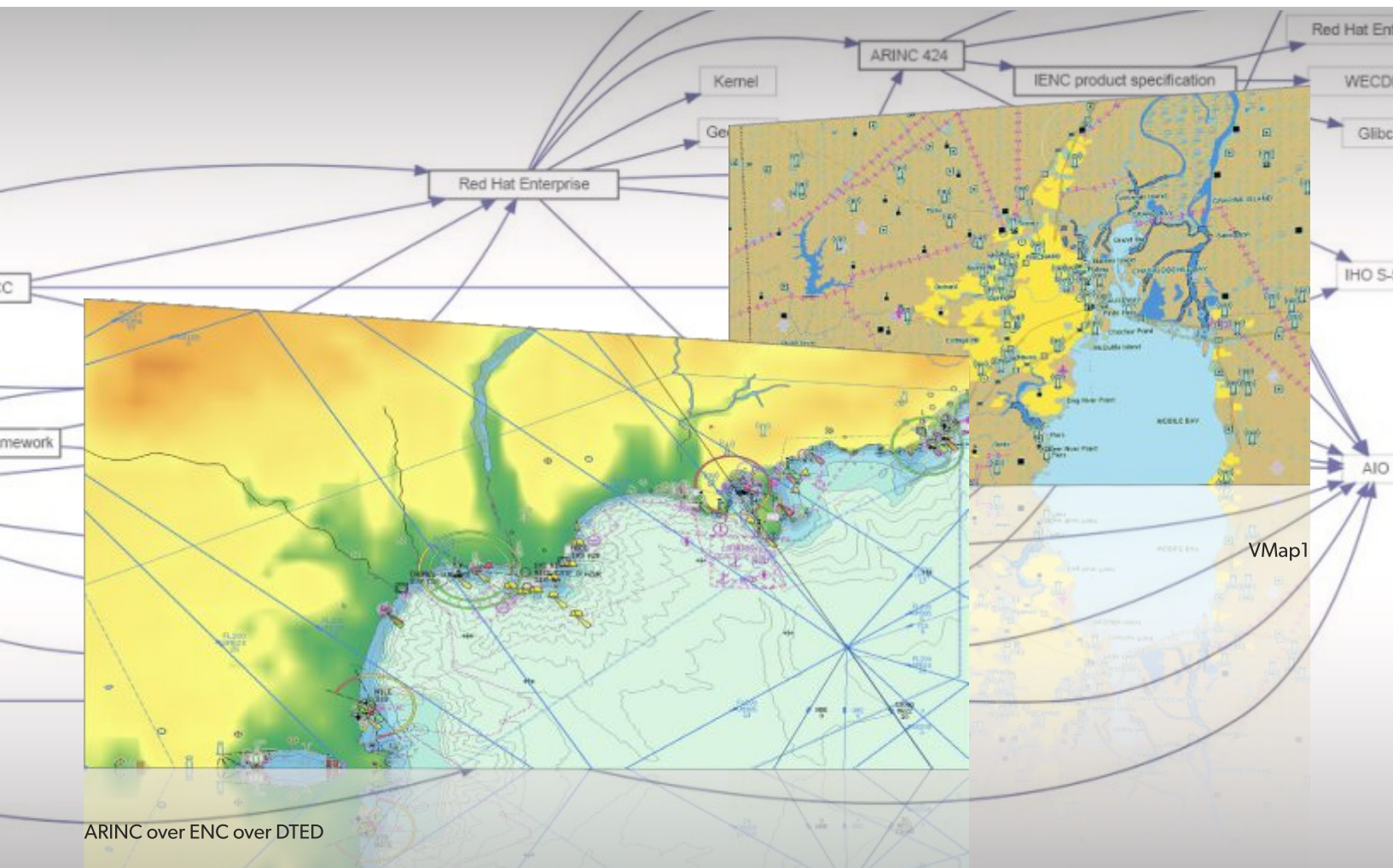


WMS CHARTSERVER



PRODUCT DESCRIPTION

ChartServer is a WMS server that enables the user to view nautical chart data (e.g. S-63 encrypted ENCs). It can be used in combination with or as a backdrop to other geo-spatial data layers (e.g. weather). ChartServer is specifically designed for performance oriented applications, generated to display chart data using web technology. ChartServer is developed in accordance with OGC requirements, making it the perfect tool for the integration with your application.

PRODUCT HIGHLIGHTS

- Supports WMS version 1.1.1 and 1.3.0
- Prefilled with SevenCs "The Chart"
- Includes easy to use SevenCs ChartHandler for S-63 chart installation
- Chart Object Filtering
- Chart Rotation
- Includes desktop chart viewer
- Flexible license model
- Opportunity to read many S-57 typical object parameters, such as AtoNs or anchorages.

WMS CHARTSERVER

FUNCTIONAL OVERVIEW

SUPPORTED CHART PRODUCTS

The ChartServer generates images of vector or raster nautical charts on request of the client application and supports a wide range of formats:

- ENC 2.0
- AML 1.0, 2.1, 3.0
- IENC 2.x
- ARCS
- DNC
- VMap0
- VMap1
- DTED
- ARINC 424

SUPPORTED FUNCTIONS AND FEATURES

ChartServer offers a wide range of core functions and features such as:

- Automated chart selection by position and scale
- Support of most common ECDIS chart settings
 - switch for lights, text, soundings, display category
 - chart depth display by means of contour values, e.g. the safety contour
 - different colour palettes for day, bright and night display
- Advanced object filtering, e.g. offshore only, aids to navigation only, etc.
- Support of most common EPSG coordinate reference systems plus the Gnomonic projection
- Support of chart rotation
- Configurable colour table for DTED
- Remote server configuration and administration
- Chart object query by position
- Scope of deliver, SevenCs' tool ChartHandler for installation of S-63, encrypted ENC and other chart products
- Support of bounding boxes exceeding 360° east/west
- Advanced feature queries
- Full-blown example client, based on OpenLayers
- Configurable chart loading algorithm

SUPPORTED OPERATING SYSTEMS

- Windows 7, 10, Windows Server 2016, 2019
- Linux (all the most commonly-used distributions, each in the most up-to-date version respectively).

